

MONTHLY NEWSLETTER



May Issue

SCHOOL OF THE MONTH



NOVA PIONEER TATU CITY INTERNATIONAL

www.goshule.com



DEVELOPING INNOVATORS & LEADERS WHO WILL SHAPE THE FUTURE

Located at the heart of Tatu City, Nova Pioneer's flagship campus for East Africa sits within one of the region's most forward-thinking developments; a fitting address for a school that thinks boldly about what learning can look like. The campus boasts modern facilities set on 6.5 acres of land and operates as a full-day school.

Nova Pioneer Tatu City International offers the Cambridge Curriculum, an internationally accredited programme, bringing a rigorous and innovative approach to education focused on developing each individual's full potential. The Cambridge offering runs from Early Years through to Year 8, with plans to expand further as students progress through higher grades.

Classes are hands-on, interactive, and student-centred. Teachers guide students to discover solutions themselves, giving each child individual attention to uncover and strengthen their unique talents and abilities. Classrooms at the Tatu City campus are named after African heroes and inspiring global figures driving progress for the continent; a small detail that speaks volumes about the school's identity. Nova Pioneer Tatu City International is not simply teaching the Cambridge syllabus. It is raising a generation of young Africans who know where they come from and are already being prepared for where they are going.

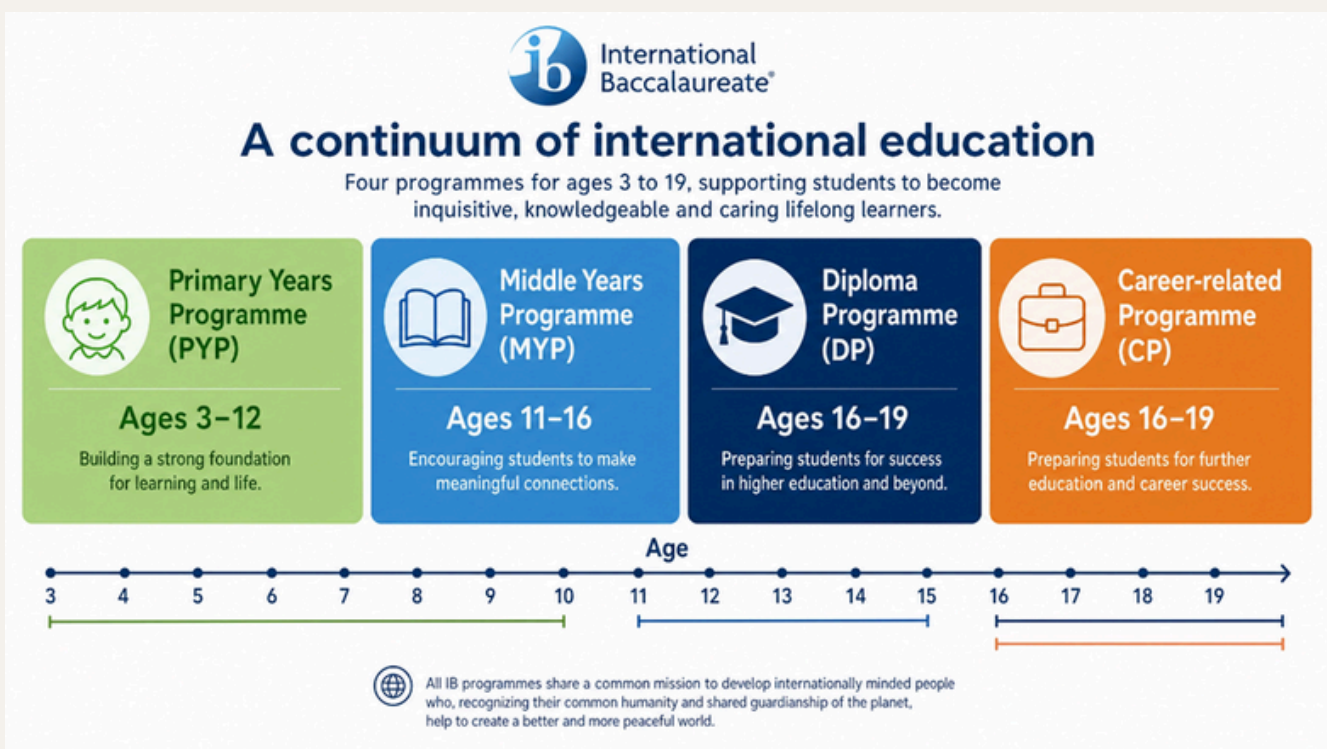
WHAT IS THE INTERNATIONAL BACCALAUREATE, AND HOW DOES IT WORK

The International Baccalaureate is a globally recognized educational framework built around one core idea: that education should develop the whole child, not just produce exam scores. Rather than focusing narrowly on content, the IB is designed to develop knowledge, skills and attitudes, critical thinking, research, communication, and international mindedness. Its mission, simply put, is to produce young people who are curious, principled, and capable of navigating a complex world.

Understanding the Four IB Programmes

The IB offers four distinct programmes for different age groups, serving approximately 1.95 million students aged 3 to 19 across more than 150 countries.

Programme	Age Range	Focus	Year Established
Primary Years Programme (PYP)	3-12 years	Inquiry-based learning and foundational skills	1997
Middle Years Programme (MYP)	11-16 years	Academic foundation with real-world connections	1994
Diploma Programme (DP)	16-19 years	University preparation and rigorous academics	1968
Career-related Programme (CP)	16-19 years	Career pathways combined with academic study	2012



CONT.

How are students assessed?

IB assessment combines continuous teacher evaluation throughout the programme with final examinations marked by external examiners, measuring both what students know and how they apply that knowledge. This matters for Kenyan parents accustomed to systems where everything rides on one terminal exam. In the IB, your child's coursework, projects, and ongoing performance all count.

Will universities recognise it?

Yes, and increasingly so. As of 2024, more than 5,900 schools across over 140 countries offer IB programmes, and each year, over 4,500 universities in more than 110 countries receive IB applications and transcripts. Top universities in the UK, US, Canada, and across Africa actively recruit IB students. Locally, Kenyan universities are becoming more familiar with IB qualifications, though it is worth confirming equivalency requirements directly with individual institutions.

Is it the right fit for your child?

IB is demanding of students and of families. It rewards children who are naturally curious, self-driven, and comfortable thinking beyond a single right answer. If your child thrives under structured, exam-focused learning, the transition to IB's open-ended inquiry model can feel like a steep climb initially. It also comes at a cost: IB schools in Kenya typically charge higher fees than those offering the CBE or IGCSE curricula, so the financial commitment deserves serious consideration alongside the academic one.

CONT.

A good early years teacher knows when to step in with a question that deepens the thinking, and when to step back and let the child figure it out.

Research shows that the Effective Pre-School, Primary and Secondary Education project, a study that followed more than 3,000 children from age three into their teens, found that school settings that balance child-initiated play with adult-guided learning produce the strongest results. Children who experience rich, play-led environments alongside skilled adult interaction outperform those pushed into formal academics earlier, and the effects remain visible years later, even into adolescence.

The American Academy of Pediatrics found that play helps build the skills necessary to support children's executive functioning; not just what they learn, but how they learn. It also found that a play-based approach contributes meaningfully to children's social development, teaching children to cooperate and negotiate with one another.

What about literacy and numeracy?

This is the question every parent wants answered. Effective play-based schools do not ignore letters and numbers; they weave them into everyday activity. Children learn to recognise their own names, count things that matter to them, play with sounds and rhymes, and tell stories. Young children learn through hands-on experiences, problem-solving, imaginative play, and collaboration, and these are precisely the foundations that make formal reading and writing easier to pick up when the time comes.

The Bottom Line

Play-based learning is not a Western concept imported to confuse you. It is grounded in decades of research on how all children, regardless of background, learn best in their early years. The question is not whether play belongs in the classroom. It is whether the school is implementing it well.

UNIFORM CARTEL ROW;MPS CONSIDERS SCHOOL UNIFORM BAN



A motion sponsored by Nyeri Town MP Duncan Mathenge, anchored in Articles 43 and 53 of the Constitution of Kenya, is pushing to enforce the constitutional guarantee of free and compulsory basic education, arguing that the current uniform system is quietly dismantling that right.

One of the central proposals would require schools to allow parents to purchase uniforms from any vendor of their choice, provided the attire meets the institution's approved standards, effectively ending the system where designated suppliers face no competition and charge whatever the market will bear.

The Education (Amendment) Bill 2026 goes further, seeking to prohibit school heads and boards of management from directing parents to specific suppliers, a practice that has seen prices inflated by as much as 300% compared to the open market. The bill also introduces a clause preventing schools from changing uniform designs frequently, a tactic commonly used to force parents into buying new sets every two to three years.

If passed, the government expects the cost of a full secondary school uniform set to drop from an average of KES 15,000 to approximately KES 6,000 , a projected saving of up to 60% per household.

The motion also proposes a ban on sending students home over non-statutory fees, including charges for school feeding programmes, remedial classes, and sports activities. According to the motion, denying children access to education because of unpaid extra charges undermines the right to education and disproportionately affects vulnerable learners. **Source: The Daily Nation**

SPOTLIGHT

NEW BOOK ALERT!

EMPOWERED FOR IMPACT

A Christian Guide to Leadership, Positive Mindset and Entrepreneurial Spirit for Students and Youth

LEAD LIKE CHRIST
Discover timeless biblical principles for servant leadership.

THINK POSITIVE
Build a growth mindset that overcomes challenges.

ENTREPRENEURIAL SPIRIT
Turn ideas into impact and solve real-world problems.

REAL STORIES. REAL IMPACT.
Be inspired by young people making a difference in Kenya.

EQUIP. EMPOWER. IMPACT. Your World!

GET YOUR COPY TODAY!

0727403658

www.i-serveducation.com

EMPOWERED FOR IMPACT
A CHRISTIAN GUIDE TO LEADERSHIP, POSITIVE MINDSET AND ENTREPRENEURIAL SPIRIT FOR STUDENTS AND YOUTH
VIC OTIENO
You were made on purpose, for a purpose. MAKE AN IMPACT.



LOOKING FOR AN INTERNATIONAL SCHOOL IN KENYA

CONTACT US TODAY

0115285345

info@goshule.com

www.goshule.com



GoSHULE

When choosing who to work with, look for three things:

- Reliability – Do they deliver on time and consistently?
- Value – Are their solutions affordable and impactful?
- Trust – Do they stand by their word and build lasting relationships?

SHOP ONLINE

KAWA
GARMENTS LTD
"A Tradition of Quality"



<https://kawagarments.co.ke/>

WISDOM CORNER

*“Waste no more time arguing
what a good man should be. Be
one.”*

Marcus Aurelius




WWW.GOSHULE.COM


MAY ISSUE

GOSHULE MONTHLY NEWSLETTER

From school highlights to latest education insights, each issue is a curated guide to support your child's educational journey.

ADVERTISE WITH US

 Info@goshule.com

 0115285345

